

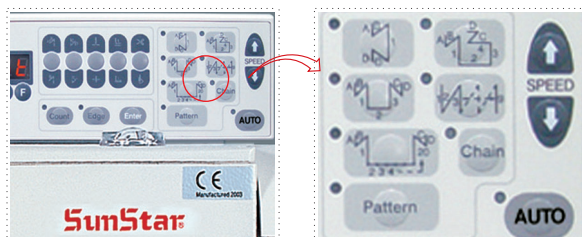
KM-572BL Series

High Speed, 2-Needle, Unison Feed
Lock Stitch Machine with Automatic Thread Trimmer

KM - **572** **BL** - 

Hook		Trimming and Motor	
BL	2.5 Hook	No mark	Non-Trimming : Clutch Motor
		7	Trimming : Servo Motor

>> Operation Box



► Stable stitch length attainment

- The installation of the Fortuna AC Servomotor Series III minimizes the speed change during the start and ending of sewing.
And the AUTO function attains the stable stitch length.

Specification

Model		KM-572BL-7	KM-572BL
Application		Heavy material (Seat, bag, tent)	
Lubrication		Automatic Lubrication	
Max. Sewing Speed		2,000 spm	
Max. Stitch Length		9mm	
Needle Bar Stroke		36mm	
Thread Take Up Stroke		75mm	
Height of Presser Foot	By Hand	10.5mm	
	By Knee	16mm	
	Automatic	16mm (Optional)	-
The Height of Between Main and Sub Presser Foot		2~6mm	
Hook		Horizon 2.5 hook	
Needle (When it makes shipment)		DP × 17 #23	
Automatic Back-Tack Device		Provided	-
Automatic Trimming Device		Provided	-
Main Motor		AC Servo Motor (500W)	Clutch Motor
Gauge		Standard : 6.4	
		Special : 3.2, 4, 4.8, 8, 9.5, 12.7, 16, 19, 25.4	

* Specifications and appearance are subject to change for the improvement of products without prior notice.

 **SUNSTAR MACHINERY CO., LTD.**

TRADE OFFICE

#178-212, G AJWA - DONG, SEO - KU, INCHEON KOREA
TEL : (82 - 32) 580 - 5740 ~ 60 FAX : (82 - 32) 584 - 3025 ~ 6

WEB-SITE

<http://www.sunstar.co.kr>

E-MAIL

sunstar@sunstar.co.kr
fortuna@sunstar.co.kr

OVERS EAS NETWORK

SUNSTAR MACHINERY (SHANGHAI) CO., LTD.
TEL : 86 21 6957 6311 FAX : 86 21 6957 6312
SUNSTAR MACHINERY (SHANGHAI) CO., LTD. SHANGHAI BRANCH
TEL : 86 21 6353 2233 FAX : 86 21 6353 8640
SUNSTAR QINGDAO BRANCH
TEL : 86 532 482 2236 FAX : 86 532 481 1262
SUNSTAR NANJING BRANCH
TEL : 86 25 464 7389 FAX : 86 25 464 7389
SUNSTAR HANGZHOU BRANCH
TEL : 86 571 8704 4709 FAX : 86 571 8601 6046

OVERS EAS NETWORK

SUNSTAR TIANJIN BRANCH
TEL : 86 22 2445 8882 FAX : 86 22 2445 2400
SUNSTAR HONGKONG LTD.
TEL : 852 2729 707 FAX : 852 2729 7573
SUNSTAR GUANGDONG BRANCH
TEL : 86 769 249 1610 FAX : 86 769 234 4042
SUNSTAR FUJIAN BRANCH
TEL : 86 595 8859 8871 FAX : 86 595 8859 8872
SUNSTAR U.S.A INC.
TEL : 1 305 591 9596 FAX : 1 305 591 0661
SUNSTAR HOCHIMINH BRANCH OFFICE
TEL : 84 8 811 0302 FAX : 84 8 811 4588
SUNSTAR HANOI BRANCH OFFICE
TEL : 84 4 734 0268 FAX : 84 4 734 0278
SUNSTAR NEW DELHI OFFICE
TEL : 91 124 280 3006 FAX : 91 124 280 3007
SUNSTAR JAKARTA BRANCH OFFICE
TEL : 62 21 4586 5839 FAX : 62 21 4586 5840
SUNSTAR MACHINERY(SINGAPORE)
TEL : 008 65 6341 5015 FAX : 008 65 6341 5016

AGENT:

High Speed, 2-Needle, Unison Feed
Lock Stitch Machine with Automatic Thread Trimmer

KM-572BL Series



KM-572BL Series

High speed 2-needle unison feed lock stitch machine with automatic thread trimmer born with SunStar's advanced technology!

Combining highly advanced Fortuna III motor with high-speed twin needle sewing machine series, in which new various functions are integrated to be used conveniently, we have completely applied high-tech mechatronics to sewing machine.

This would contribute to enhance quality of sewing pattern and productivity.

>> Feature



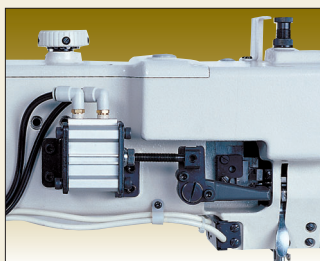
► Stable Stitch Length

An "Auto" function for steady stitch length is newly provided by installing the Fortuna AC Series III Motor that minimizes the speed change when starting and stopping sewing work.



► Large pulley and embedded accurate synchronizer for work efficiency

The large pulley fitted for accurate needle location and control during the start and ending of sewing provides the highest efficiency for heavy fabric sewing, and the simple synchronizer able to separate and adjust the pulley's up/down needle stop locations individually is embedded.



► Air pressure auto knee-lifting device

The large pulley fitted for accurate needle location and control during the start and ending of sewing provides the highest efficiency for heavy fabric sewing, and the simple synchronizer able to separate and adjust the pulley's up/down needle stop locations individually is embedded.



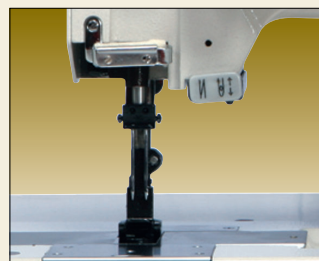
► Powerful and Stable Upper Feeding

With the block-type upper feeding structure, it displays strong power during the sewing with thickness gap and the sewing for extremely heavy materials.



► Accurate Upper Feeding

The accurate movement of the upper feed and the feed dog can resolve puckering and slipping depending on sewing materials.

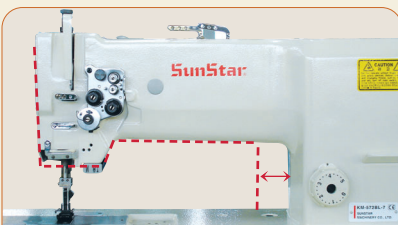


► Multifunctional Reverse Button

The simple touch of the reverse button enables the reverse sewing and the up/down movement of the needle bar.



>> Feature



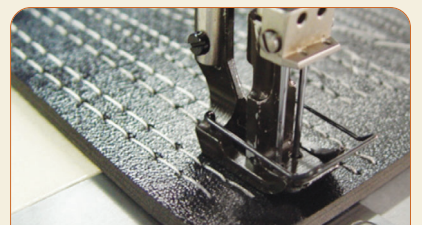
Expand Working Space

By extending length of the arm bed, wider working space can be secured for improved productivity.



2.5 Fold Hook

Maximizing productivity by adopting Horizon 2.5 fold Hook



Stable and Accurate Sewing

Powerful unison feeding mechanism, it guarantees even stitching quality.